

Cutting Steel Creating Marvels

KALPADEEP INDUSTRIES PRIVATE LIMITED

Building Strength in Steel

About Us

Building reliable steel solutions with clarity, quality and commitment.

Kalpadeep Industries Pvt. Ltd. is a professionally managed steel fabrication company engaged in the manufacturing of industrial structural components and engineered steel structures. The company specializes in the fabrication of conveyor galleries, pipe racks, bunkers, silos, structural platforms, and other heavy engineering components used in power plants, cement plants, and various industrial projects. With modern fabrication facilities, experienced technical personnel, and a strong focus on quality and safety, the company is capable of executing complex fabrication assignments with precision and reliability. Kalpadeep Industries is committed to delivering high-quality products, maintaining strict quality standards, and meeting project timelines efficiently. The company continues to expand its capabilities and infrastructure to serve the growing requirements of industrial and infrastructure sectors, while maintaining a customer-focused approach and long-term relationships with its clients.

Vision

To move forward as a leading manufacturer of steel structural and engineering solutions for power and process industries, consistently delivering projects with product perfection, engineering excellence, a skilled and enthusiastic team, and the best customer service - all in line with international standards.

Mission

At Kalpadeep Industries Pvt. Ltd., our mission is to be the most trusted name in steel fabrication by delivering world-class structural engineering, fabrication, and erection solutions. We are committed to serving customers with quality, integrity, and reliability, while continuously upgrading our technology and services. Through efficient, safe, and cost-effective projects, we aim to support power and process industries worldwide and ensure our customers benefit from the advantages of large-scale production.

Core Values

- o Commitment to Quality, Health, Safety & Environment
- o Transparency, Accountability & Discipline
- o Honesty & Integrity
- o Respect for People
- o Responsibility
- o Customer Satisfaction
- o Continuous Improvement & Innovation
- o Efficiency & Effectiveness

KALPADEEP IND



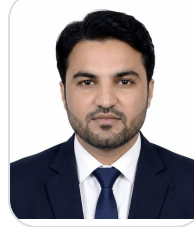
Management Messages



Manjula Tripathi

Chief Executive Officer

"Steering Kalpadeep Industries Private Limited Toward Operational Excellence in Steel Fabrication I am honored to lead operations at Kalpadeep Industries Private Limited. My vision is to strengthen our steel fabrication capabilities through innovation, p



Amit Singh

Chairman & Managing Director

"Our People, Our Strength: Kalpadeep Industries' Commitment to Excellence, Innovation, and Client Success Through Diverse Expertise, State-of-the-Art Facilities, and Unwavering Dedication to Quality Structural Steel Solutions"



Abhishek Singh

Managing Director

"Engineering Excellence Through Partnership: Kalpadeep Industries' Transformation to Value-Driven Solutions, Customer Satisfaction, and Global Recognition in Precision Tooling and Superior Engineered Manufacturing"



H.S. Choudhary

Director Technical

"As COO of Kalpadeep Industries, I reaffirm our commitment to quality, safety, reliability, innovation and sustainability—driven by rigorous standards, skilled teams, lean practices, environmental responsibility, strong partnerships and customer trust"

Company Values



Values that guide our people, our process and every client relationship.

“Kalpadeep Industries Private Limited is committed to have an on-going improvement in the quality & delivery of all fabricated products and services, at competitive price, and to maintain Kalpadeep industries position as supplier of choice ”

“कल्पदीप इंडस्ट्रीज प्राइवेट लिमिटेड प्रतिस्पर्धी मूल्य पर सभी निर्मित उत्पादों और सेवाओं की उत्कृष्ट गुणवत्ता और समयबद्ध वितरण में सुधार करने और पसंदीदा आपूर्तिकर्ता के रूप में कल्पदीप इंडस्ट्रीज स्थिति बनाए रखने के लिए प्रतिबद्ध है।”



Quality

We take pride in the quality of our work, delivering exceptional service and products that last.

Teamwork

We work collaboratively and safely to get the best results, supporting each other and our customers.

Innovation

We challenge ourselves, striving to improve and do it better.

Strategic Framework



Strategic thinking that aligns planning, engineering, manufacturing and execution.

1. Precision Engineering & Technology Integration
 - > Invest in advanced CNC cutting, automated weldi and 3D modeling (BIM)
 - > Implement ERP systems for real-time project track
 - > Reduce material waste through nested cutting optimization
2. Skilled Workforce Empowerment
 - > Continuous training on latest fabrication techniqu
 - > Strong safety culture with zero-accident protocols
 - > Certifications (ISO, ASME, AWS) to validate experti
3. Operational Efficiency
 - > Lean manufacturing principles to eliminate bottlenecks
 - > Streamlined supply chain for raw material procurement
 - > On-time delivery commitment with buffer plannin
4. Client-Centric Approach
 - > Collaborative design assistance from concept to installation
 - > Transparent communication and progress reporti
 - > Long-term partnership model beyond single proje
5. Quality Assurance & Compliance
 - > Rigorous testing (ultrasonic, radiographic, tensile)
 - > Adherence to national and international standard
 - > Traceability from raw material to finished product
6. Sustainable Growth
 - > Energy-efficient fabrication processes
 - > Scrap recycling and waste reduction initiatives
 - > Scalable infrastructure to handle large-scale proje

DESIGN

Our process begins with understanding your needs

Design is the first and most fundamental step in our process. Understanding your needs and developing a solution that meets those requirements is at the heart of everything we do.

We are experts in computer-aided design, utilising industry-leading software including AutoCAD, Advance Steel and Tekla Structures as our preferred design platforms.

Our experienced engineering team translates your vision into precise fabrication-ready models with accuracy and efficiency.

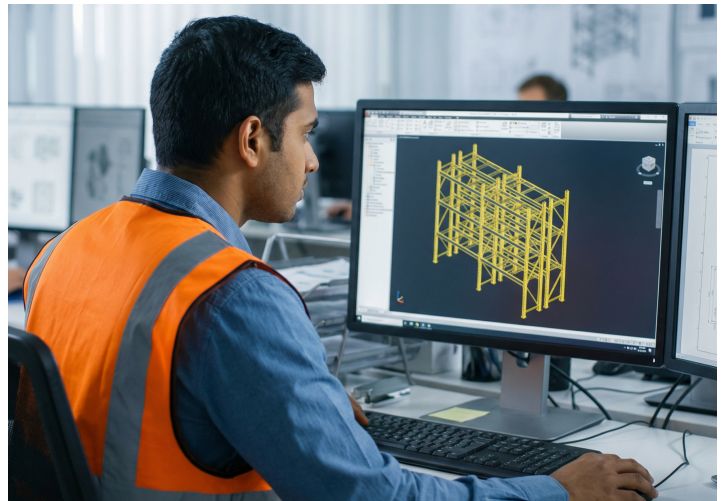
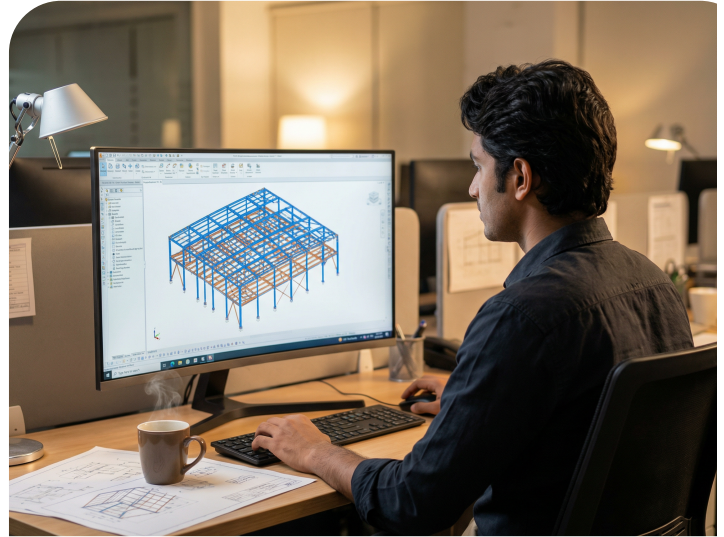
We consider six primary factors in our design process:

- >Cost
- >Aesthetic
- >Function
- >Performance
- >Manufacturability
- >Safety

In addition to our design model we also offer a site survey using the latest 3D scanning technology. This ensures that our design will always work in your actual physical space.

Our design team works closely with fabrication and installation teams from the very start, ensuring a seamless transition from drawing board to finished structure.

Learn more: <https://kalpadeepindustries.co.in>



Manufacturing



We take pride in offering high-quality manufacturing solutions to our clients. We specialise in structural steelwork and sheet metal fabrication, working across a wide range of materials including mild steel, stainless steel, aluminium, copper and brass.

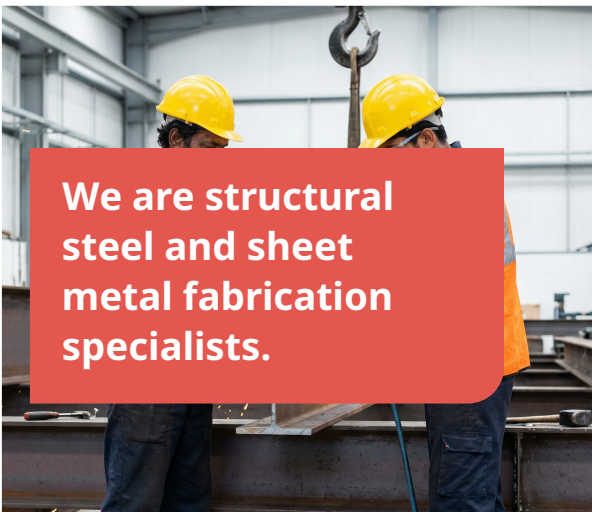
Our state-of-the-art facilities include fabrication units, workshops and storage yards. All our welders are coded to multiple weld standards in accordance with ISO 9606-1, and we hold ISO 9001 : 2015 certification for our Quality Management System.

Our manufacturing capabilities include:

- MIG, TIG and MMA welding
- CNC plasma and oxy-fuel cutting
- Press braking and plate rolling
- Drilling, sawing and shot blasting

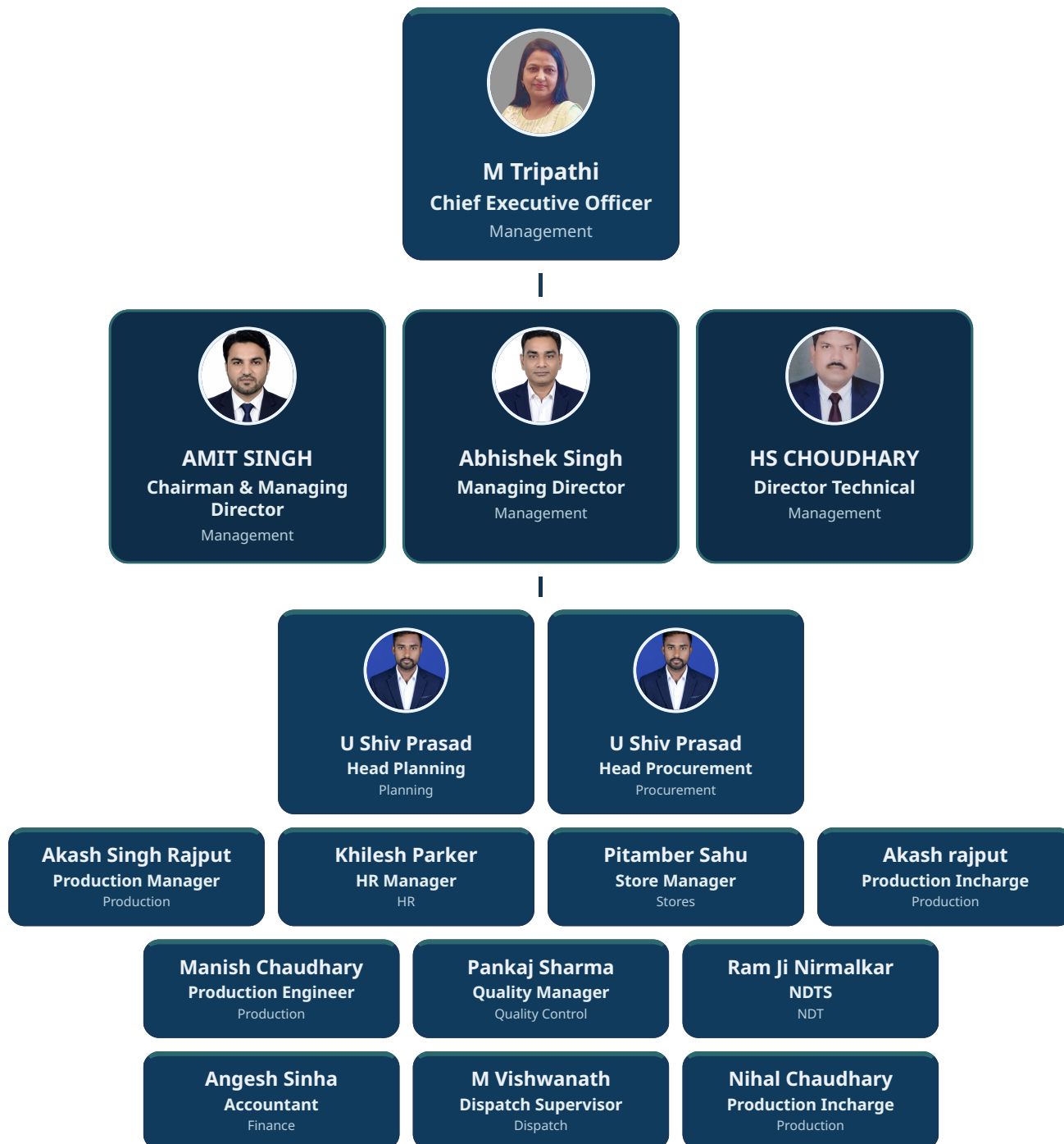
We invest continuously in our people, equipment and processes to ensure we remain at the forefront of the steel fabrication industry — delivering precision-engineered components on time and to budget.

Learn more: <https://kalpadeepindustries.co.in>



We are structural steel and sheet metal fabrication specialists.

Organisation Structure



Certifications



Occupational Health & Safety Management Certificate



Quality Management Systems Certificate



ZED BRONZE CERTIFICATE

Company Infrastructure - Unit 1

KALPADEEP INDUSTRIES PRIVATE LIMITED UNIT-1

Factory

CHAWNI CHOWK BHILAI

Area Summary

Total Area: 3.2 Acres

Office Area: 1200 Square Feet

Covered Area

Fabrication Shed -1

20 X 60 Square Meters

Factory Shed -2

12.5 X 25 Square Meters

Factory Shed -3

15 X 50 Square Meters

Factory Shed -4

15 X 48 Square Meters

Electric Power Source

250

HP

Crane

14 MT Capacity

6 NumbersPlate

Machineries and Equipments

23 machinery / equipment entries are listed on the following pages.

Company Infrastructure - Unit 2

KALPADEEP INDUSTRIES PRIVATE LIMITED

Factory

Khedemarra, Jewra Sirsa, Tehsil & District Durg (C.G.)

Area Summary

Total Area: 8.2 ACRES

Office Area: 9000 SQUARE FEET

Covered Area

FACTORY SHED -1

25 METRS BY 120 METERS

This shed is proposed to have Crane
20 MT

FACTORY SHED -2

25 METRS BY 120 METERS

This shed is proposed to have Crane
20 MT

FACTORY SHED -3

25 METRS BY 120 METERS

This shed is proposed to have Crane
50 MT

FACTORY SHED -4

15 METRS BY 120 METERS

This shed is proposed to have Crane
10 MT

FACTORY SHED -4

15 METRS BY 120 METERS

This shed is proposed to have Crane
10 MT

Electric Power Source

3 PHASE POWERR SUPPLY

800 KVA

PROPOSED

3 PHASE ENGINE ALTERASNATOR

600 KVA

PROPOSED

Crane

GANTRY CRANE

12 MT Capacity

The Crane has span of 30 Meters and
will cover 70 Meters open Area for
Stock handling

Machineries and Equipments

21 machinery / equipment entries are listed on the following pages.

Machineries and Equipments - Unit 1

KALPADEEP INDUSTRIES PRIVATE LIMITED UNIT-1

S.No.	Machine Name	Capacity	Make	Qty
1	Plate Bending/Strengthening Machine	Upto 25 mm X 2.5 Meters Width	GSEW	01
2	Portable Auto Cut Plugging	Upto 125 mm	Metro/Kakkar	10
3	Broch Cutting Machine	Upto 40 mm	All Cut/ Broch Cutter	23
4	Hand Cutting Torch	Upto 125 mm	Kakkar	10
5	Welding Rectifier	600/400 Amperes	Wldtech/ESAB	18
6	Mig Welder Machine	400 Amps	KEMPI/POWERCORN	22
7	Grinder Machine	AG-9"/AG-7"/AG-5"/AG-4"	KPT/Ralliwolf	30
8	Buffing machine	2800 Rpm	KPT	10
9	Air/Blasting Compressor	6.5Kg/Square centimeter	FSC	01
10	Portable bakingoven	25 Kgs		01
11	Portable Electrode Carryoven	0-150 C Aristo 5 Kgs	ARC	12
12	Radial Drill Machine	30 mm X Arm 1200	BATALA	02
13	Airless Painting Gun		Jaguar	03
14	Blasting Machine		Blastive Industries	01
15	CNC Plasma	3000 x 15000 Mtr	Equi-cut LG	01
16	SAW Machine	1250 Amp	ESAB	01
17	Hydraulic Press	500 MT	N H Hydraulics	01
18	Hydraulic Ironworker Machines	HIW – 85	HPT ENGINEERING	01

Machineries and Equipments - Unit 1

KALPADEEP INDUSTRIES PRIVATE LIMITED UNIT-1

S.No.	Machine Name	Capacity	Make	Qty
19	Flux Holding Oven	25 Kg	ESAB	01
20	Electrode Baking Oven	25 Kg	ESAB	01
21	Electrode Holding Oven	25 Kg	ESAB	01
22	Mobile Crane	14 MT	Escorts	02
23	Air/Blasting Compressor	110 CFM / 8.5 Bar.g	ELGI EQUIPMENTS LIMITED	01

Machineries and Equipments - Unit 2

KALPADEEP INDUSTRIES PRIVATE LIMITED

S.No.	Machine Name	Capacity	Make	Qty
8	teel Processor (Plasma Cutting Machine, Punching Machine, CNC Drilling Machine, Oxy-acc Cutting Machine, Radial Drill Machine)		PROPOSED	
9	PTW Machine Including Straightening		PROPOSED	
11	I-Beam Straightening Machine		PROPOSED	
12	CNC Drill Machine BT 40 Drill Machine		PROPOSED	
13	Auto Operated Blasting Machine	2mtr x 3mtr	PROPOSED	
15	Iron Worker		PROPOSED	
19	Radial Drill Machine	Up to 72mm Dia	PROPOSED	
20	CNC Profile Cutting Machine/ Strip Cutting Machine	With Plasma upto 32 mm Width 5.2mtr x 26mtr Power Source - Hypertherm Only	PROPOSED	
1	Center Lathe Machine	(chuck dia 400-500mm), (Center Distance 1500-2000)	PROPOSED	
1	Flange Straightening Machine	Flange thickness- 80 MM	WUXI ZHOUXIANG CHINA	1
2	Cantilever type H beam welding machine	Flange width: 200-800mm Flange height: 200-1500mm H beam length: 4000-15000	Wuxi Zhouxiang	1
3	Double column welding machine	andem welding, with 2 sets of DC MZ-1250 welding sources and 2 sets of AC MZE-1250 welding sources, 95mm ² cable	Wuxi Zhouxiang	1
4	Heavy Beam Welding Machine with Built in Flange Straightening Equipment	Overall Beam height in mm 350 to 2500, Web Thickness in mm 6 to 40, Maximum Flange Width in mm 350 to 1200, Flange Thickness in mm 8 to 60 & Beam Length in Meters 4 to 12.0	Primo Automation Systems Pvt. Ltd	1
5	Beam Stiffeners/Gussets/Base Plate welding Robotic Cell	H beam Width 200mm to 1200mm, H Beam Height 150 mm to 600 mm & H Beam Length 12000 mm	Primo Automation Systems Pvt. Ltd.	2
6	THREE ROLLER HYDRAULIC PLATE ROLLING MACHINE	Maximum thickness of rolled plate mm T40*B3000*φ1500(σ _s ≤245MPa)	BHAVYA MAVHINE TOOLS LLP	1
7	Horizontal H beam Production Line	H beam section size: Web height 250-1500 , Web thickness : 4-14 mm, Flange width: 150-500 mm, Flange thickness: 5-20 mm	WUXI ZHOUXIANG CHINA	1
14	Covered Blasting Booth	20mtr X 20mtr	PROPOSED	
16	Electrically Operated Trolley	15MT	PROPOSED	

Machineries and Equipments - Unit 2

KALPADEEP INDUSTRIES PRIVATE LIMITED

S.No.	Machine Name	Capacity	Make	Qty
17	Mechaical Trolley		PROPOSED	
18	Horizontal Boring Machine	X3000 x Y2200 x Z1000, (Spindal Dia 150mm)	PROPOSED	
10	SAW Welding Machine Cantilever Type		PROPOSED	

Infrastructure Photos - Unit 1

KALPADEEP INDUSTRIES PRIVATE LIMITED UNIT-1



Company Top View



Company Aerial View



Company Shed Front view



Storage Area



Storage Area



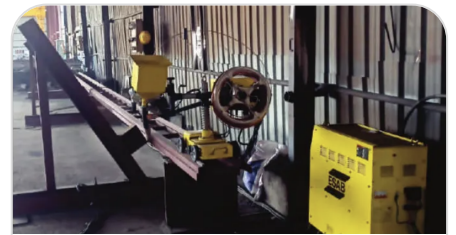
Gantry Crane 15 Metric Ton



CNC Plasma Cutting Machine



Hydraulic Press Machine



SAW Machine 250 Amperes.

Infrastructure Photos - Unit 1

KALPADEEP INDUSTRIES PRIVATE LIMITED UNIT-1



Hydraulic Press Machine



Iron Worker



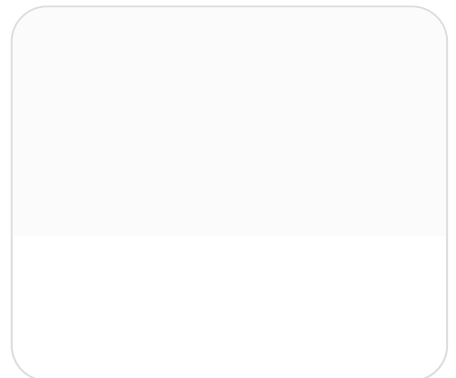
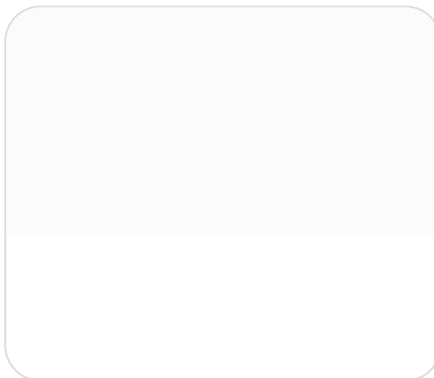
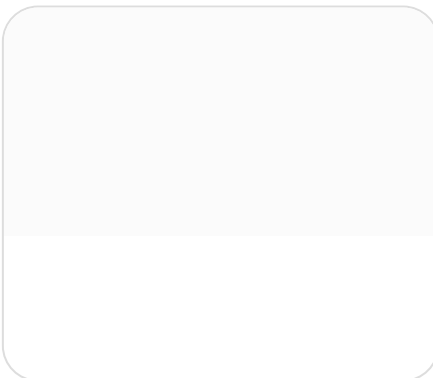
Air Blasting Compressor



Air Painting Gun & Blasting Hopper



Blasting Booth



Major Projects



Paharpur Cooling Tower Structure

Cooling Tower Main ACC Structure Assembly is a type of cooling system used in power plant that condenses steam using ambient air instead of water.



PLENUM CHAMBER



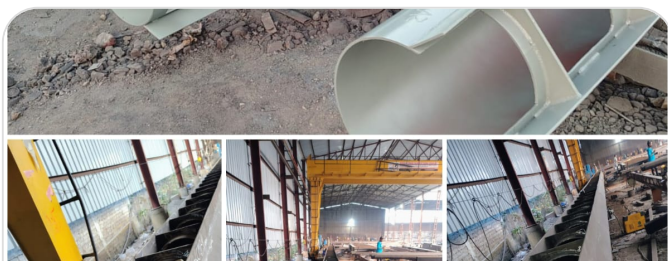
Cooling Tower Structure

Cooling Tower Main ACC Structure Assembly is a type of cooling system used in power plant that condenses steam using ambient air instead of water.



Thermal Power Structure

Building Structure



CONDENSATE COLLECTION MANIFOLD STRUCTURE

A condensate collection manifold in a cooling tower system is used to collect, channel, and remove condensed water (condensate) that forms in different parts of the system (like ducts, piping, or air-handling sections connected to the tower)



Pipe Rack Structure

Pipe Rack Structure

Clients



BTL EPC LTD.



FRIGATE



ISGEC



JSPL, Mandir Hazoud, Raipur



JSW



JSW Severfield Structures Ltd.



L&T Construction



Moglix Industrial
Tools & Equipment



B & R Nalco



Thermax Limited



TKIL INDUSTRIES PVT. LTD.



Contact



Connect with us for
enquiries, projects and
fabrication support.

Email: marketing@kalpadeepindustries.co.in

Phone: +91 73891 11701, +91 788-4060761

Website: <https://kalpadeepindustries.co.in>

Registered Office:

KALPADEEP INDUSTRIES PRIVATE LIMITED H.NO.506, STREET NO.22 ZONE 1 SECTOR-11, GOUTAM NAGAR KHURSIPAR, Bhilai, Durg, Chhattisgarh PIN Code: 490011

Works:

Unit-1 Khedemarra, Jewra Sirsa, Tehsil & District Durg (C.G.)
Unit -2 KALPADEEP INDUSTRIES PRIVATE LIMITED Works : Plc No.15, Gaffar Building, Chawani Chowk, Bhilai, Durg (C.G.) - 490026.